

3. Eligible Uses – Revenue Loss

3.1. How is revenue defined for the purpose of this provision? [appendix added 6/23]

The Interim Final Rule adopts a definition of “General Revenue” that is based on, but not identical, to the Census Bureau’s concept of “General Revenue from Own Sources” in the Annual Survey of State and Local Government Finances.

General Revenue includes revenue from taxes, current charges, and miscellaneous general revenue. It excludes refunds and other correcting transactions, proceeds from issuance of debt or the sale of investments, agency or private trust transactions, and revenue generated by utilities and insurance trusts. General revenue also includes intergovernmental transfers between state and local governments, but excludes intergovernmental transfers from the Federal government, including Federal transfers made via a state to a locality pursuant to the CRF or the Fiscal Recovery Funds.

Tribal governments may include all revenue from Tribal enterprises and gaming operations in the definition of General Revenue.

Please see the appendix for a diagram of the Interim Final Rule’s definition of General Revenue within the Census Bureau’s revenue classification structure.

3.2. Will revenue be calculated on an entity-wide basis or on a source-by-source basis (e.g. property tax, income tax, sales tax, etc.)?

Recipients should calculate revenue on an entity-wide basis. This approach minimizes the administrative burden for recipients, provides for greater consistency across recipients, and presents a more accurate representation of the net impact of the COVID-19 public health emergency on a recipient’s revenue, rather than relying on financial reporting prepared by each recipient, which vary in methodology used and which generally aggregates revenue by purpose rather than by source.

3.3. Does the definition of revenue include outside concessions that contract with a state or local government?

Recipients should classify revenue sources as they would if responding to the U.S. Census Bureau’s Annual Survey of State and Local Government Finances. According to the Census Bureau’s [Government Finance and Employment Classification manual](#), the following is an example of current charges that would be included in a state or local government’s general revenue from own sources: “Gross revenue of facilities operated by a government (swimming pools, recreational marinas and piers, golf courses, skating rinks, museums, zoos, etc.); auxiliary facilities in public recreation areas (camping areas, refreshment stands, gift shops, etc.); lease or use fees from stadiums, auditoriums, and community and convention centers; and rentals from concessions at such facilities.”

3.4. What is the time period for estimating revenue loss? Will revenue losses experienced prior to the passage of the Act be considered?

Recipients are permitted to calculate the extent of reduction in revenue as of four points in time: December 31, 2020; December 31, 2021; December 31, 2022; and December 31, 2023. This approach recognizes that some recipients may experience lagged effects of the pandemic on revenues.

Upon receiving Fiscal Recovery Fund payments, recipients may immediately calculate revenue loss for the period ending December 31, 2020.

3.5. What is the formula for calculating the reduction in revenue?

A reduction in a recipient's General Revenue equals:

$$\text{Max} \{ [\text{Base Year Revenue} * (1 + \text{Growth Adjustment})^{\left(\frac{n_t}{12}\right)}] - \text{Actual General Revenue}_t ; 0 \}$$

Where:

Base Year Revenue is General Revenue collected in the most recent full fiscal year prior to the COVID-19 public health emergency.

Growth Adjustment is equal to the greater of 4.1 percent (or 0.041) and the recipient's average annual revenue growth over the three full fiscal years prior to the COVID-19 public health emergency.

n equals the number of months elapsed from the end of the base year to the calculation date.

Actual General Revenue is a recipient's actual general revenue collected during 12-month period ending on each calculation date.

Subscript *t* denotes the calculation date.

3.6. Are recipients expected to demonstrate that reduction in revenue is due to the COVID-19 public health emergency?

In the Interim Final Rule, any diminution in actual revenue calculated using the formula above would be presumed to have been "due to" the COVID-19 public health emergency. This presumption is made for administrative ease and in recognition of the broad-based economic damage that the pandemic has wrought.

3.7. May recipients use pre-pandemic projections as a basis to estimate the reduction in revenue?

No. Treasury is disallowing the use of projections to ensure consistency and comparability across recipients and to streamline verification. However, in estimating the revenue shortfall using the formula above, recipients may incorporate their average annual revenue growth rate in the three full fiscal years prior to the public health emergency.

3.8. Once a recipient has identified a reduction in revenue, are there any restrictions on how recipients use funds up to the amount of the reduction?

The Interim Final Rule gives recipients broad latitude to use funds for the provision of government services to the extent of reduction in revenue. Government services can include, but are not limited to, maintenance of infrastructure or pay-go spending for building new infrastructure, including roads; modernization of cybersecurity, including hardware, software, and protection of critical infrastructure; health services; environmental remediation; school or educational services; and the provision of police, fire, and other public safety services.

However, paying interest or principal on outstanding debt, replenishing rainy day or other reserve funds, or paying settlements or judgments would not be considered provision of a government service, since these uses of funds do not entail direct provision of services to citizens. This restriction on paying interest or principal on any outstanding debt instrument, includes, for example, short-term revenue or tax anticipation notes, or paying fees or issuance costs associated with the issuance of new debt. In addition, the overarching restrictions on all program funds (e.g., restriction on pension deposits, restriction on using funds for non-federal match where barred by regulation or statute) would apply.

3.9. How do I know if a certain type of revenue should be counted for the purpose of computing revenue loss? [5/27]

As discussed in FAQ #3.1, the Interim Final Rule adopts a definition of “General Revenue” that is based on, but not identical, to the Census Bureau’s concept of “General Revenue from Own Sources” in the Annual Survey of State and Local Government Finances.

Recipients should refer to the definition of “General Revenue” included in the Interim Final Rule. See forthcoming 31 CFR 35.3. If a recipient is unsure whether a particular revenue source is included in the Interim Final Rule’s definition of “General Revenue,” the recipient may consider the classification and instructions used to complete the Census Bureau’s Annual Survey.

For example, parking fees would be classified as a Current Charge for the purpose of the Census Bureau's Annual Survey, and the Interim Final Rule's concept of "General Revenue" includes all Current Charges. Therefore, parking fees would be included in the Interim Final Rule's concept of "General Revenue."

The Census Bureau's Government Finance and Employment Classification manual is available [here](#).

3.10. In calculating revenue loss, are recipients required to use audited financials? [6/8]

Where audited data is not available, recipients are not required to obtain audited data. Treasury expects all information submitted to be complete and accurate. See 31 CFR 35.4(c).

3.11. In calculating revenue loss, should recipients use their own data, or Census data? [6/8]

Recipients should use their own data sources to calculate general revenue, and do not need to rely on published revenue data from the Census Bureau. Treasury acknowledges that due to differences in timing, data sources, and definitions, recipients' self-reported general revenue figures may differ somewhat from those published by the Census Bureau.

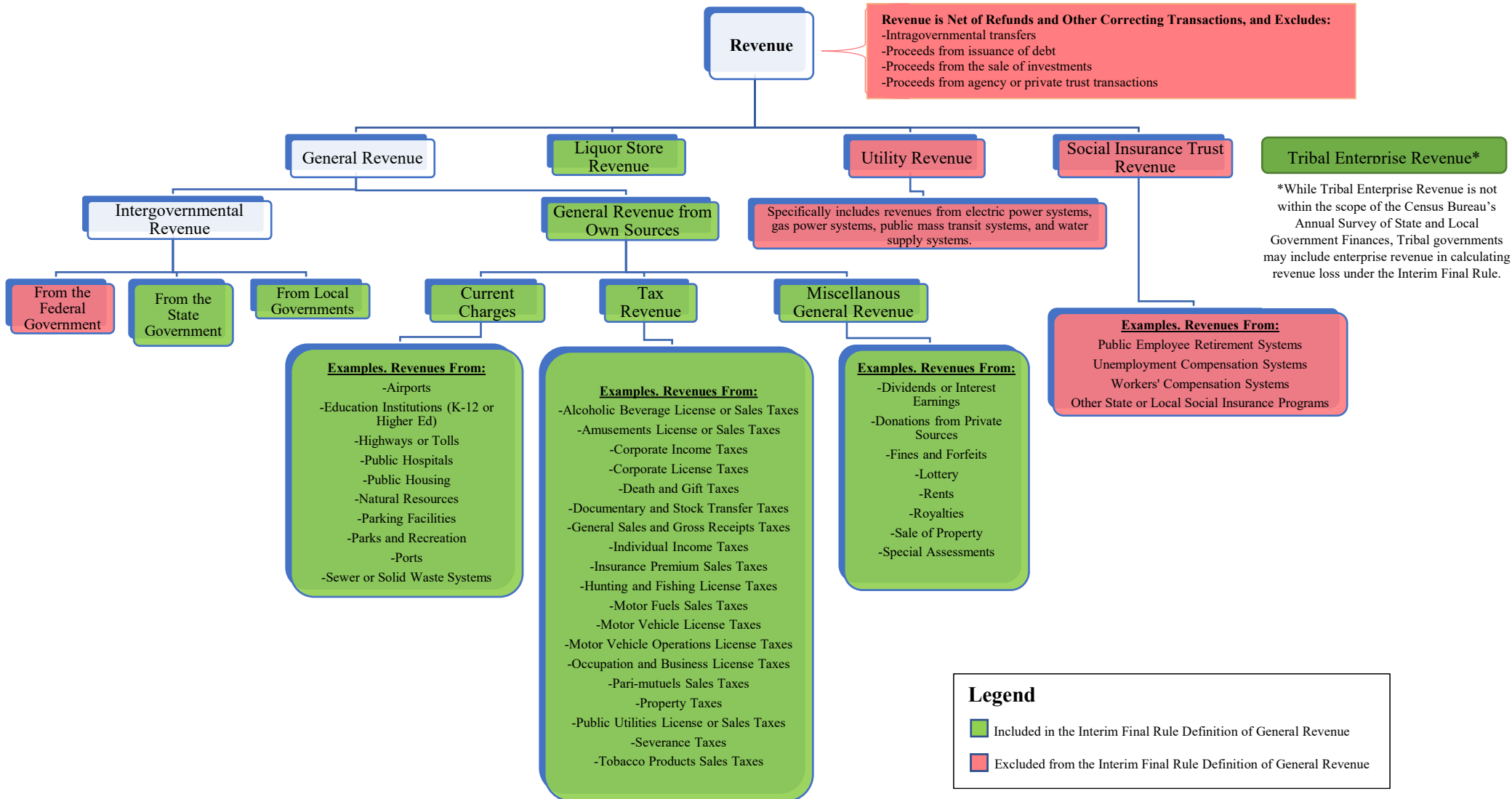
3.12. Should recipients calculate revenue loss on a cash basis or an accrual basis? [6/8]

Recipients may provide data on a cash, accrual, or modified accrual basis, provided that recipients are consistent in their choice of methodology throughout the covered period and until reporting is no longer required.

3.13. In identifying intergovernmental revenue for the purpose of calculating General Revenue, should recipients exclude all federal funding, or just federal funding related to the COVID-19 response? How should local governments treat federal funds that are passed through states or other entities, or federal funds that are intermingled with other funds? [6/23]

In calculating General Revenue, recipients should exclude all intergovernmental transfers from the federal government. This includes, but is not limited to, federal transfers made via a state to a locality pursuant to the Coronavirus Relief Fund or Fiscal Recovery Funds. To the extent federal funds are passed through states or other entities or intermingled with other funds, recipients should attempt to identify and exclude the federal portion of those funds from the calculation of General Revenue on a best-efforts basis.

Appendix: Interim Final Rule Definition of General Revenue Within the Census Bureau Classification Structure of Revenue



Source: [U.S. Bureau of the Census Government Finance and Employment Classification Manual, 2006](#); [Annual Survey of State and Local Government Finances](#)